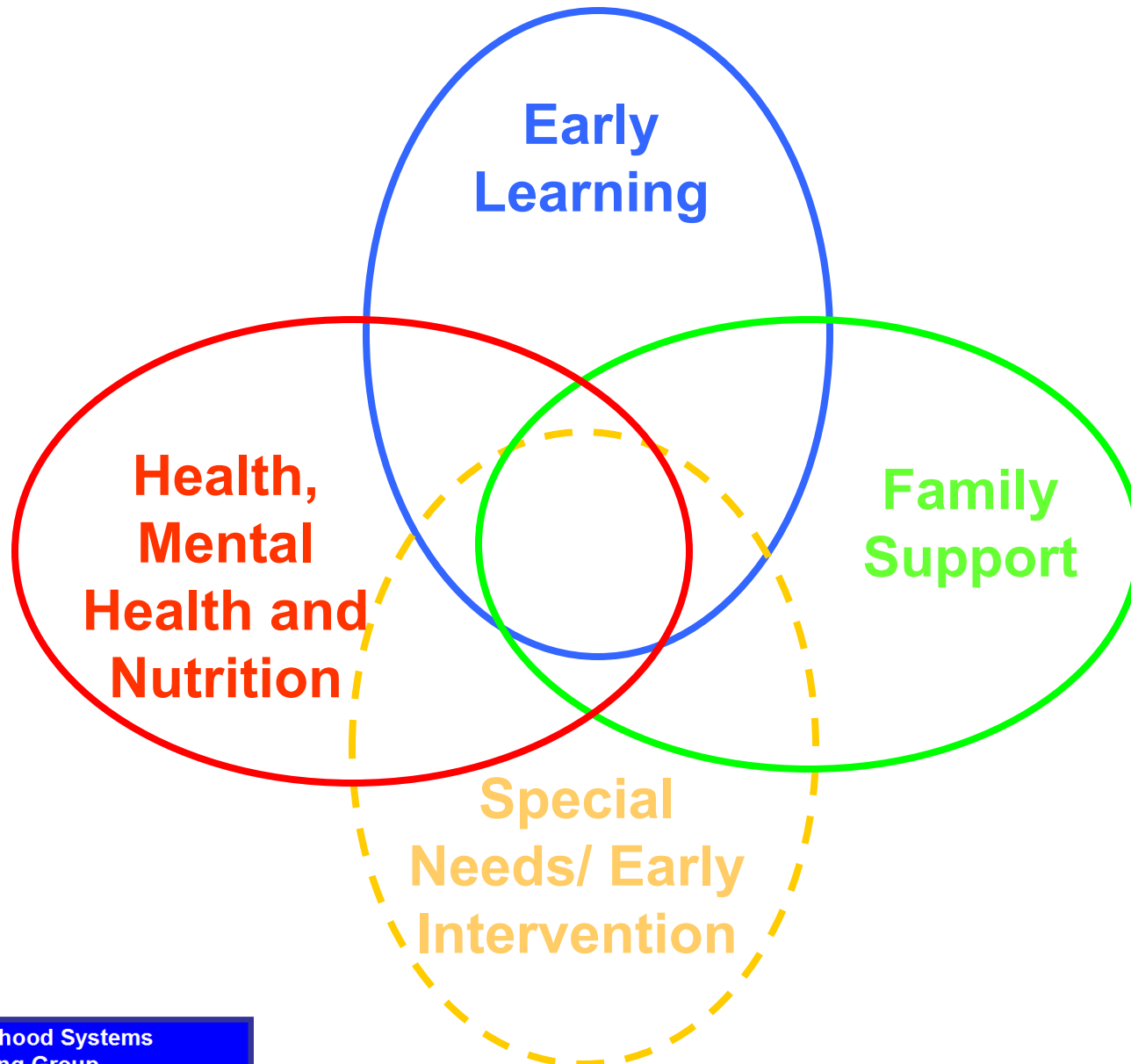


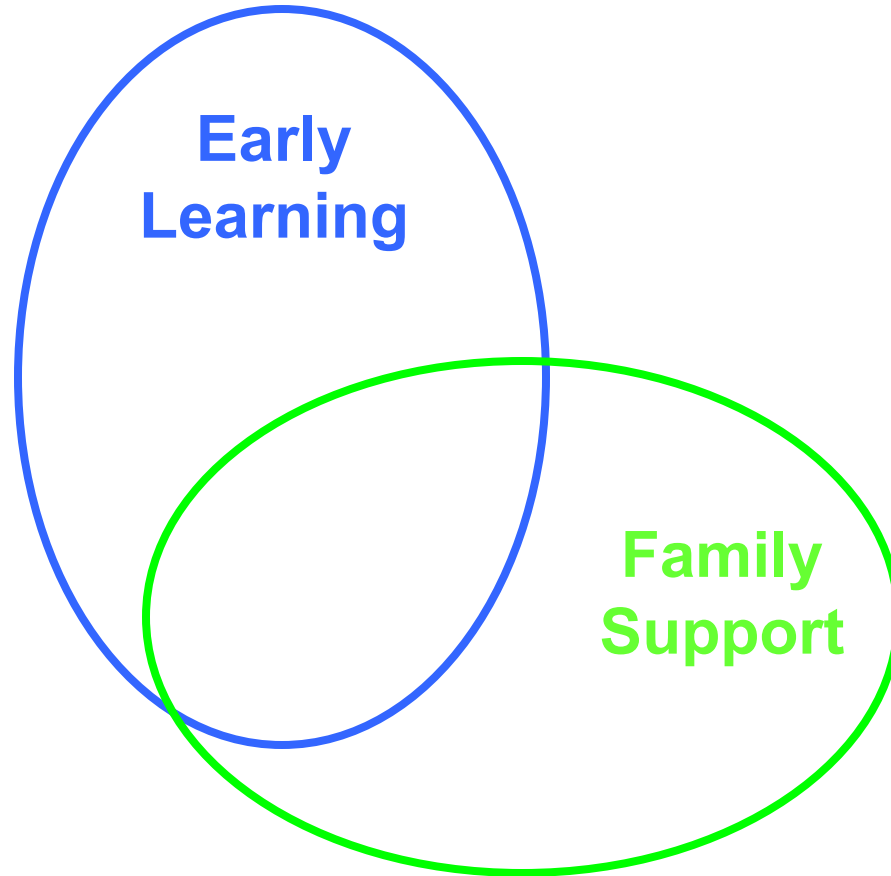
# State Early Childhood Development System



## **Early Learning**

**Early care and  
education  
opportunities in  
nurturing  
environments  
where children can  
learn what they  
need to succeed in  
school and life.**

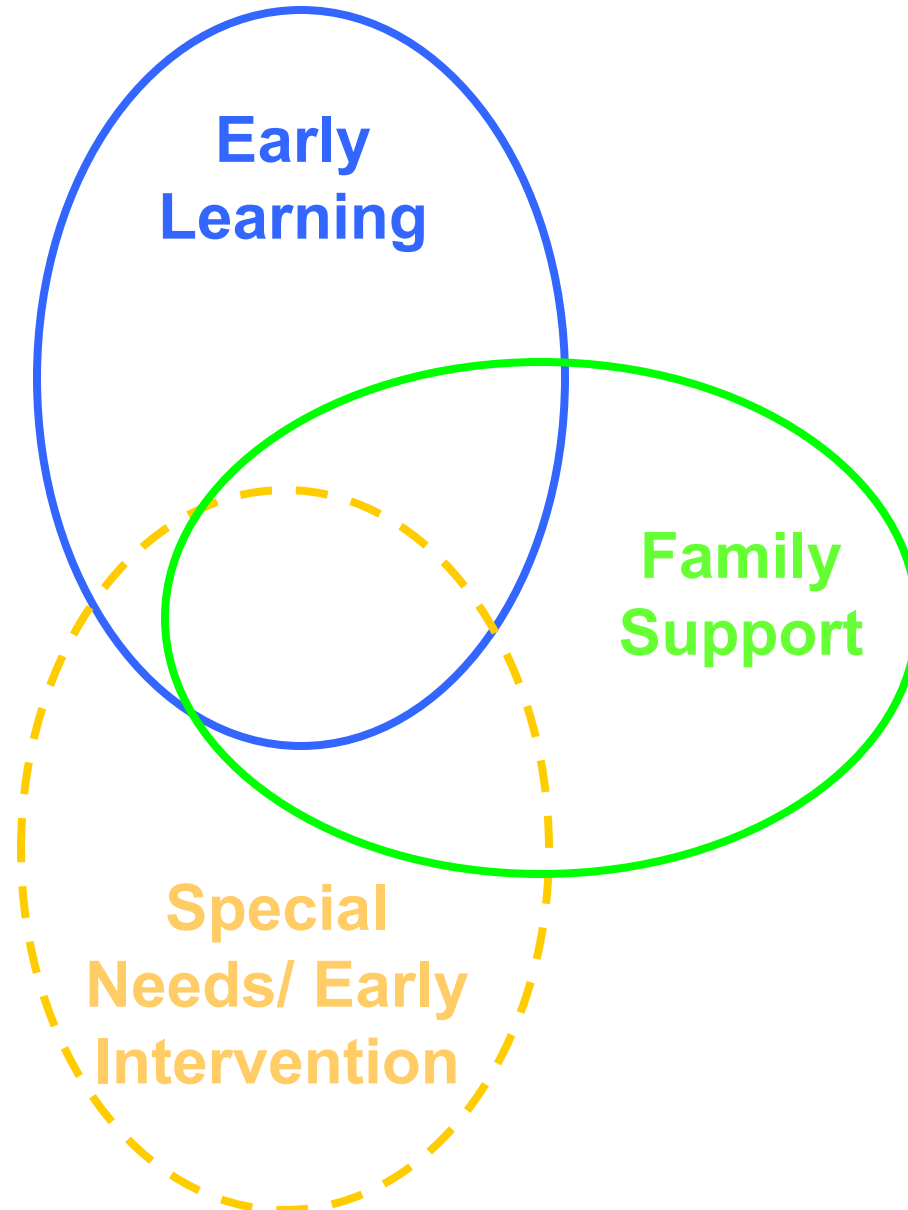
# State Early Childhood Development System



## **Family Support**

**Economic and parenting supports  
to ensure that children have  
nurturing and stable relationships  
with caring adults.**

# State Early Childhood Development System

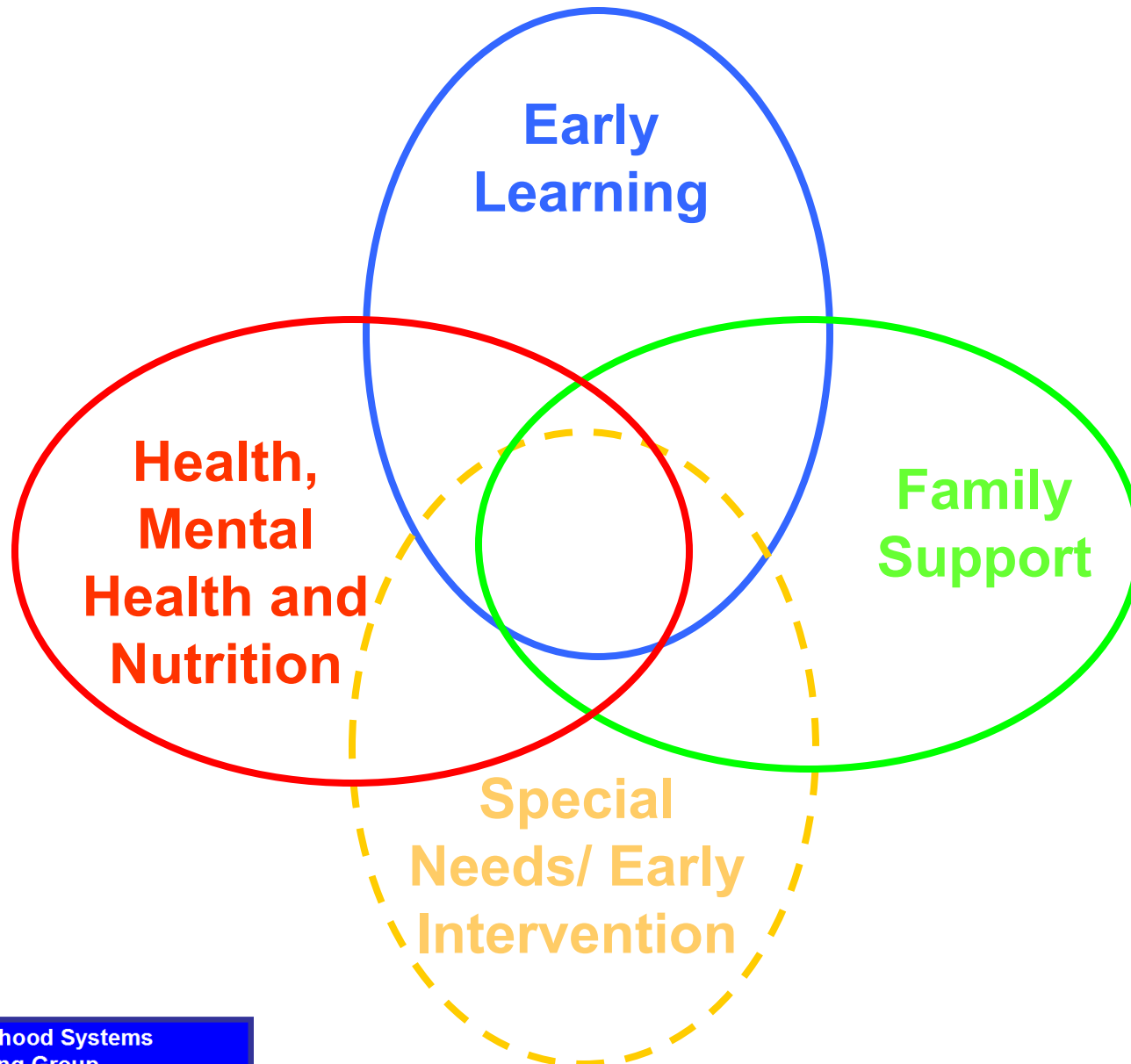




**Special  
Needs/ Early  
Intervention**

**Early identification,  
assessment and  
appropriate services for  
children with special  
health care needs,  
disabilities, or  
developmental delays**

# State Early Childhood Development System



**Health,  
Mental Health,  
and Nutrition**

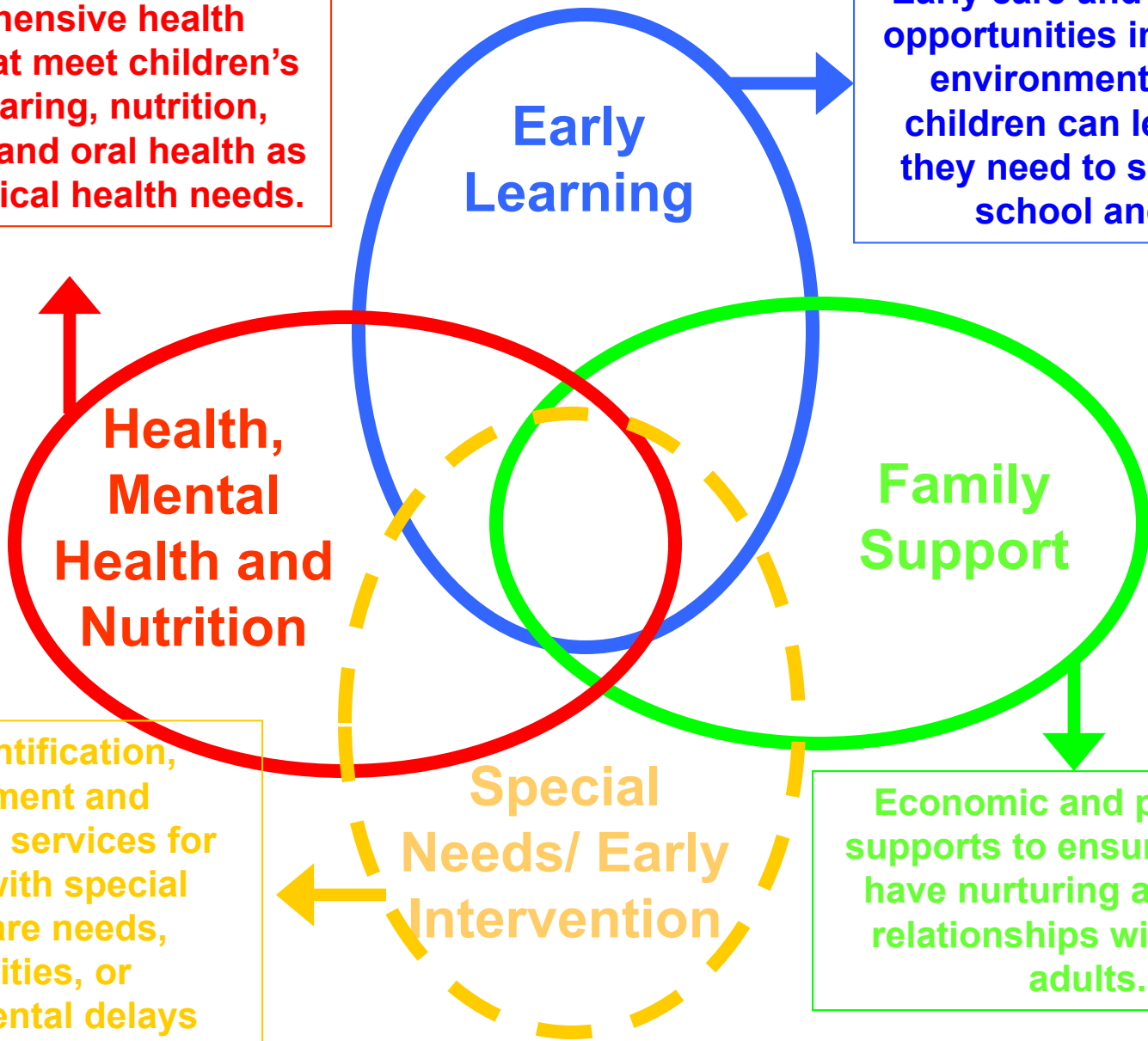
**Comprehensive health services  
that meet children's vision,  
hearing, nutrition, behavioral, and  
oral health as well as medical  
needs.**



# State Early Childhood Development System

Comprehensive health services that meet children's vision, hearing, nutrition, behavioral, and oral health as well as medical health needs.

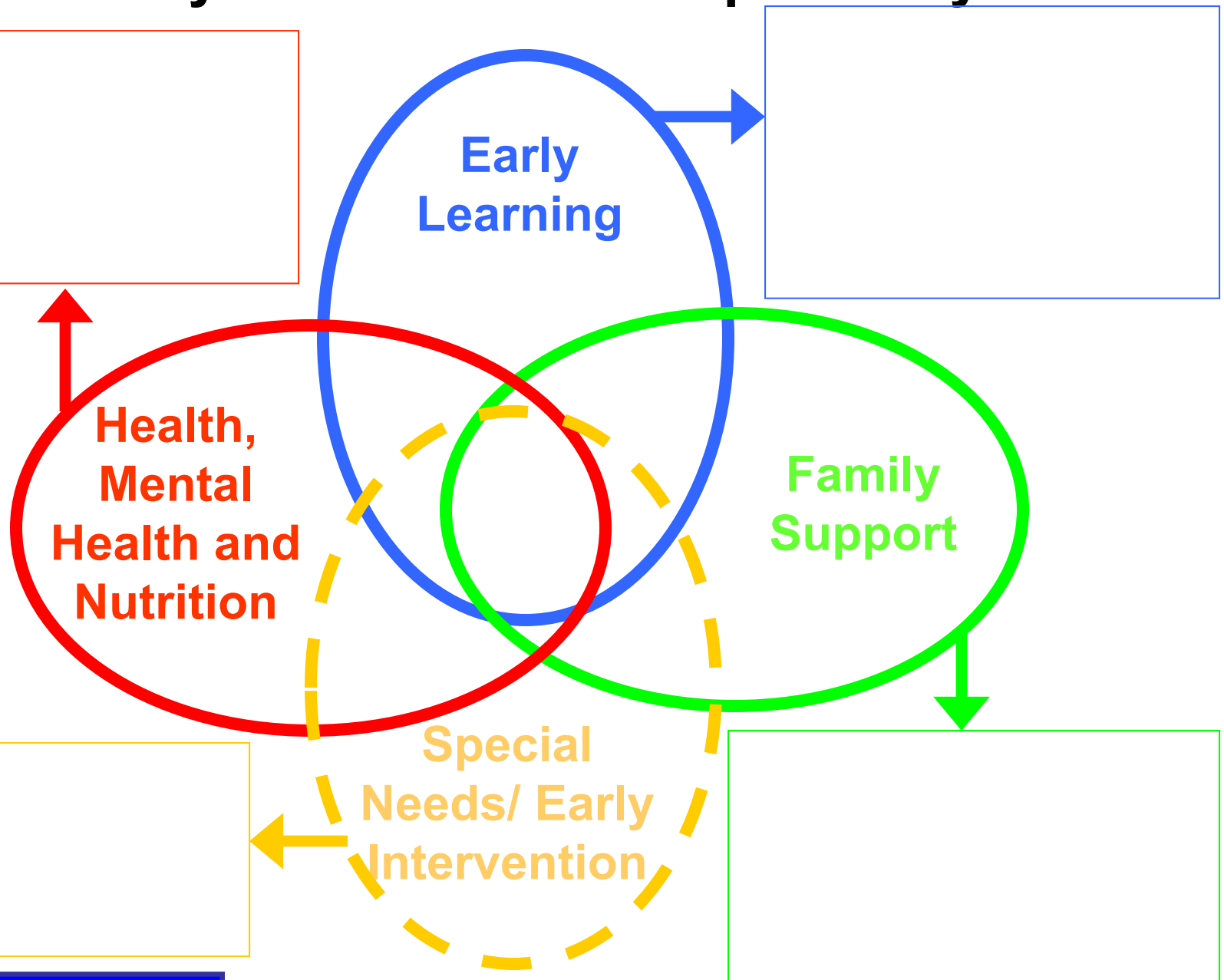
Early care and education opportunities in nurturing environments where children can learn what they need to succeed in school and life.



Early identification, assessment and appropriate services for children with special health care needs, disabilities, or developmental delays

Economic and parenting supports to ensure children have nurturing and stable relationships with caring adults.

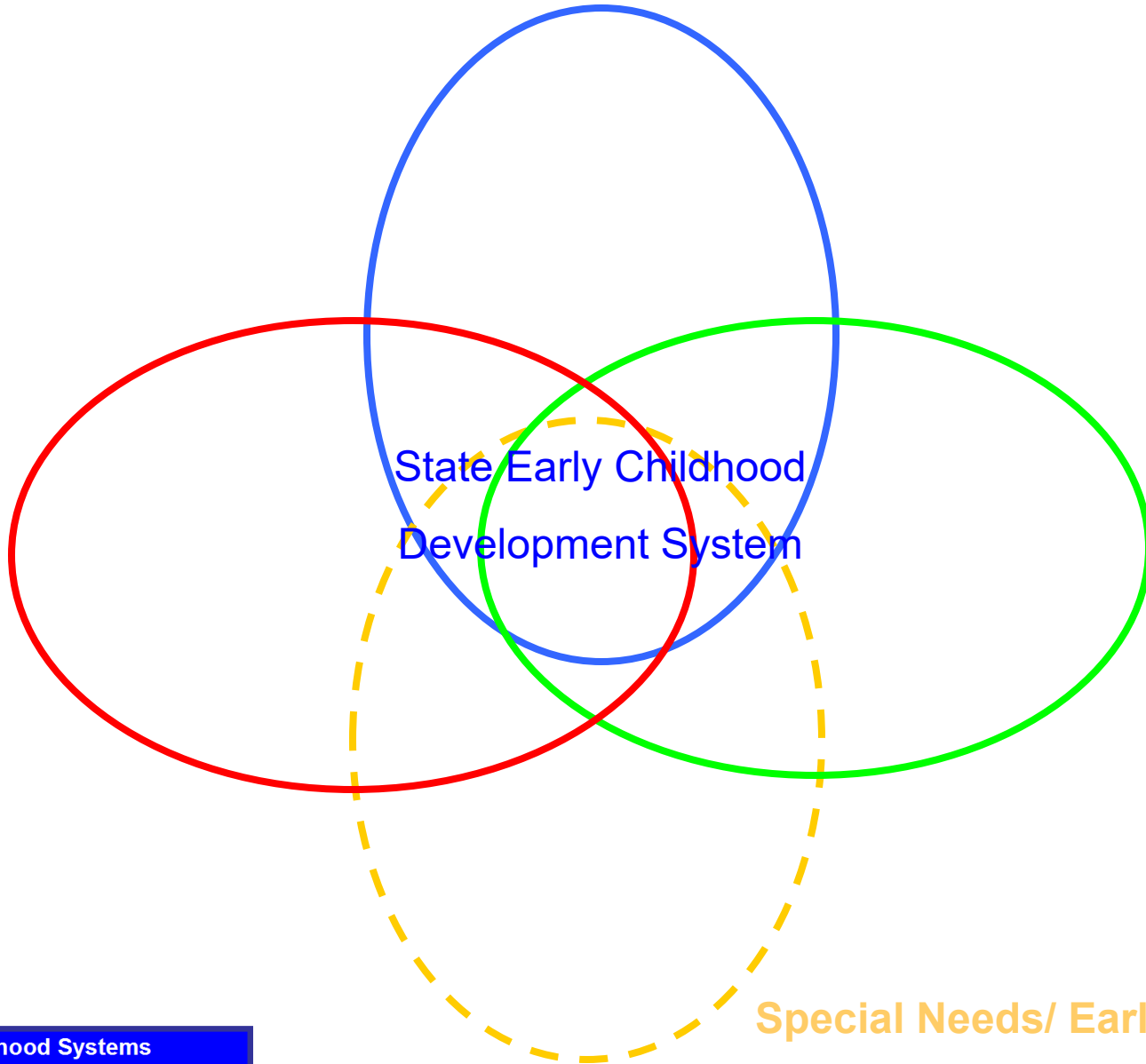
# State Early Childhood Development System



# Early Care and Education

Health, Mental Health, and Nutrition

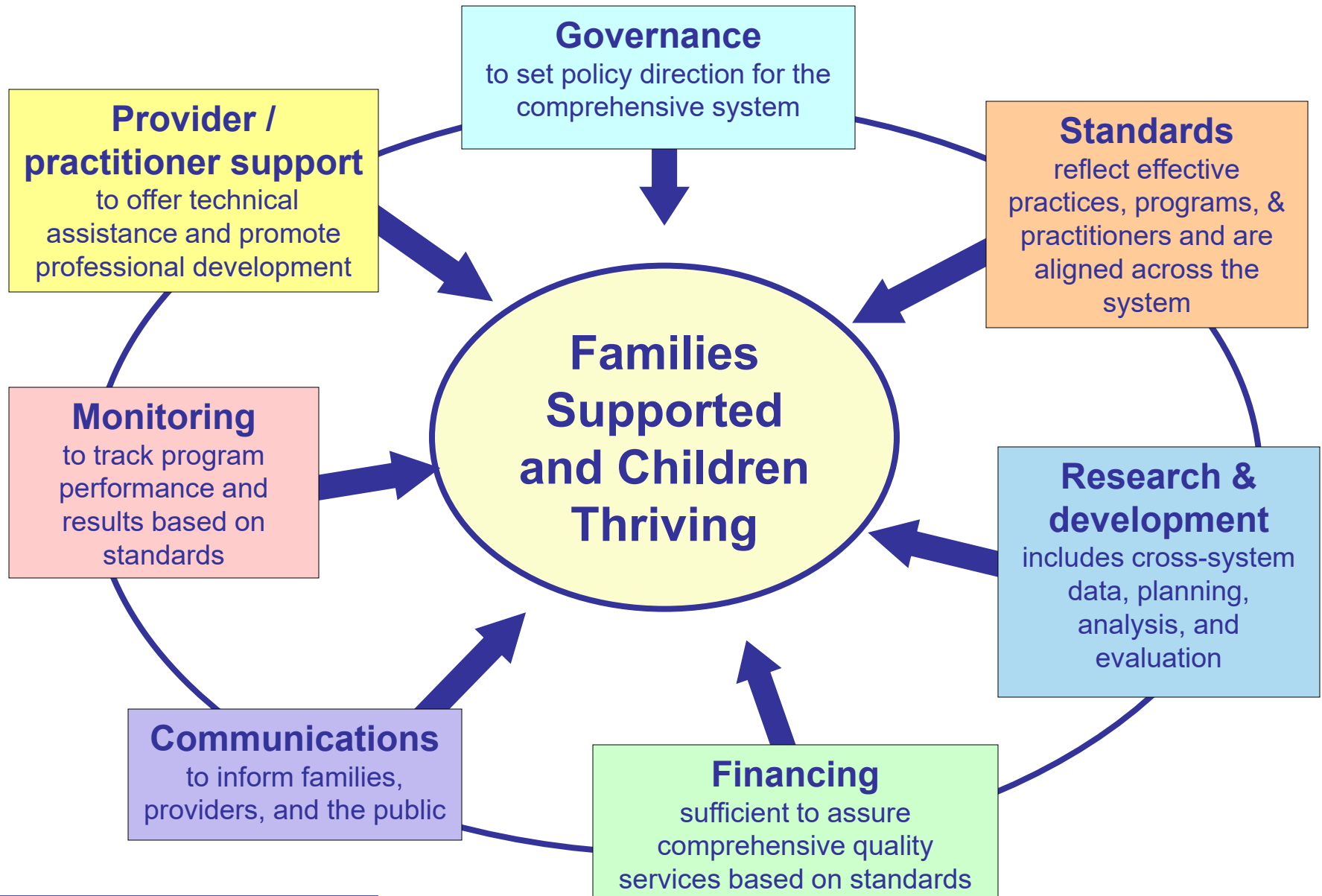
Family Support



State Early Childhood  
Development System

Special Needs/ Early Intervention

# Core Elements of an Early Childhood Development System



# Early Childhood Systems Working Group

Alliance for Early Childhood Finance -- <http://www.earlychildhoodfinance.org>

The Build Initiative -- <http://www.buildinitiative.org>

The Children's Project -- <http://www.thechildrensproject.org>

Center for Law and Social Policy (CLASP) --  
<http://www.clasp.org/publications.php?id=3>

Council of Chief State School Officers (CCSSO) --  
<http://www.ccsso.org/earlychildhood>

National Association of Early Childhood Specialists in State Departments of Education (NAECS-SDE) -- <http://www.naecs-sde.org>

National Center for Children in Poverty (NCCP) -- <http://www.nccp.org>

National Child Care Information Center (NCCIC) -- <http://nccic.acf.hhs.gov>

National Conference of State Legislatures (NCSL) --  
<http://www.ncsl.org/programs/cyf/cc.htm>

National Governors Association Center for Best Practices--  
<http://www.nga.org/center>

Smart Start National Technical Assistance Center --  
<http://www.nationalsmartstart.org/>

State Early Childhood Policy Technical Assistance Network (SECPTAN) --  
<http://www.finebynine.org>

ZERO TO THREE -- <http://www.zerotothree.org>